

**HARLESDEN
NEIGHBOURHOOD
FORUM**
shaping . planning . living

ANNUAL GENERAL MEETING

**OCTOBER 21, 2020
ONLINE MEETING
6-7 PM**

**Find about the Forum
recent development**

**Hear from the Committee
about projects and
activities**

Welcome new trustees

WELCOME!

PLEASE PUT YOUR MICROPHONE ON MUTE IF YOU ARE NOT SPEAKING.

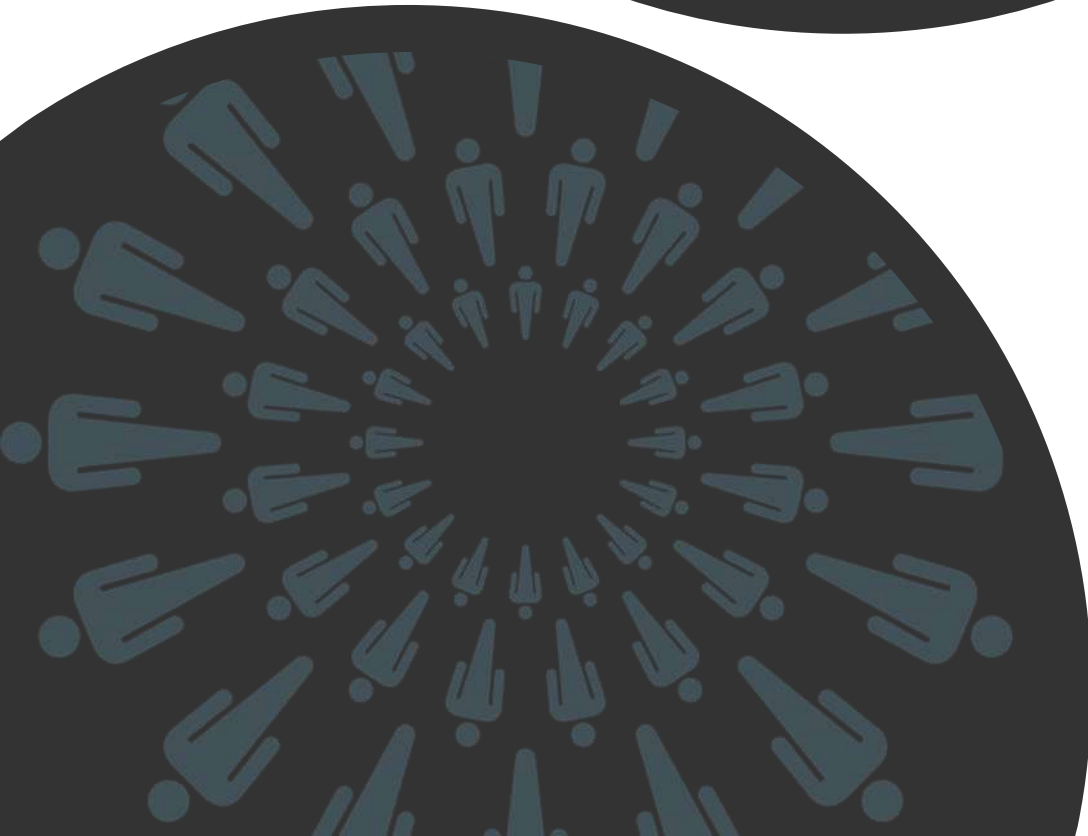
**WE WOULD LIKE EVERYONE TO FEEL SAFE AND VALUED
DURING THE MEETING.**

- ❖ **THERE WILL BE TIME ALLOCATED FOR Q&A**
- ❖ **YOU CAN ALSO ASK QUESTIONS OR COMMENT ON THE CHAT**
- ❖ **THE MEETING IS SCHEDULED FOR 1 HOUR**
- ❖ **WE WILL NOT GO OVERTIME**
- ❖ **ENSURE PEOPLE PHYSICAL AND MENTAL WELLBEING**

THANK YOU FOR YOUR COOPERATION!



HARLES DEN
NEIGHBOURHOOD
FORUM
shaping . planning



Welcome from the Chair
Madeleine Jennings

AGENDA

- 6:00** ● WELCOME AND INTRODUCTION
ONLINE PROCEDURES
- 6:10** ● APPROVAL OF THE PREVIOUS MINUTES
- 6:25** ● PRESENTATION OF ANNUAL REPORT AND ACCOUNTS
- 6:35** ● PRESENTATION OF NEW TRUSTEES
- 6:45** ● APPOINTMENT OF TRUSTEES 2020 - 2021
- 7:00** ● AOB & CLOSING

March 2020 meeting minutes



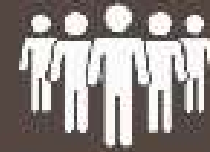
What is HNF?



Who are the trustees?



What are we doing?



Ensure your charity is carrying out its purposes for the public benefit

Comply with your charity's governing document and the law



Act in your charity's best interests



Ensure your charity is accountable



Manage your charity's resources responsibly



Act with reasonable care and skill

Working Together for Harlesden

Part of a network of organisations

Influencing local decision makers and engaging stakeholders and statutory bodies

WE ARE ONE OF THE MANY GROUPS WORKING ACROSS DIFFERENT PROJECTS AND ISSUES
WE BELIEVE IN PARTNERSHIPS



OPDC
OLD OAK AND
PARK ROYAL
DEVELOPMENT
CORPORATION



Brent

Making Planning Relevant

Making Planning Real

Making A Difference



What's happened since March:

 Social Distancing Survey

 Re-designation

 Canal Tow Path

 Clean Environment

What are our plans?:

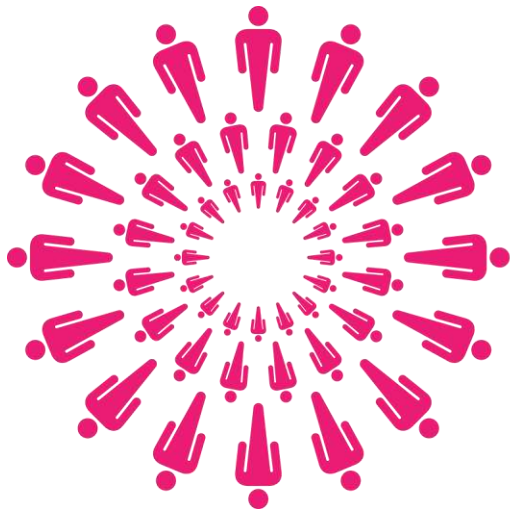
 OPDC Engagement

 Inclusive Growth Harlesden

 Consulting

 Sign up and spread the word!





HARLESDEN
NEIGHBOURHOOD
FORUM
shaping . planning . living

Community engagement & Redesignation

Ilaria Esposito - Coordinator



COVID-19 & SOCIAL DISTANCING SURVEY



The following key themes came out of the responses



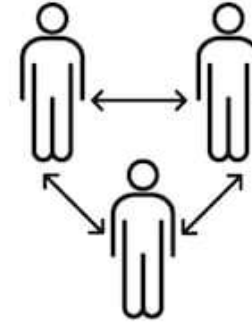
Concerns about bus stops



Concerns about crossings



SOCIAL DISTANCING



Concern about the way shops apply or can maintain social distance guidelines



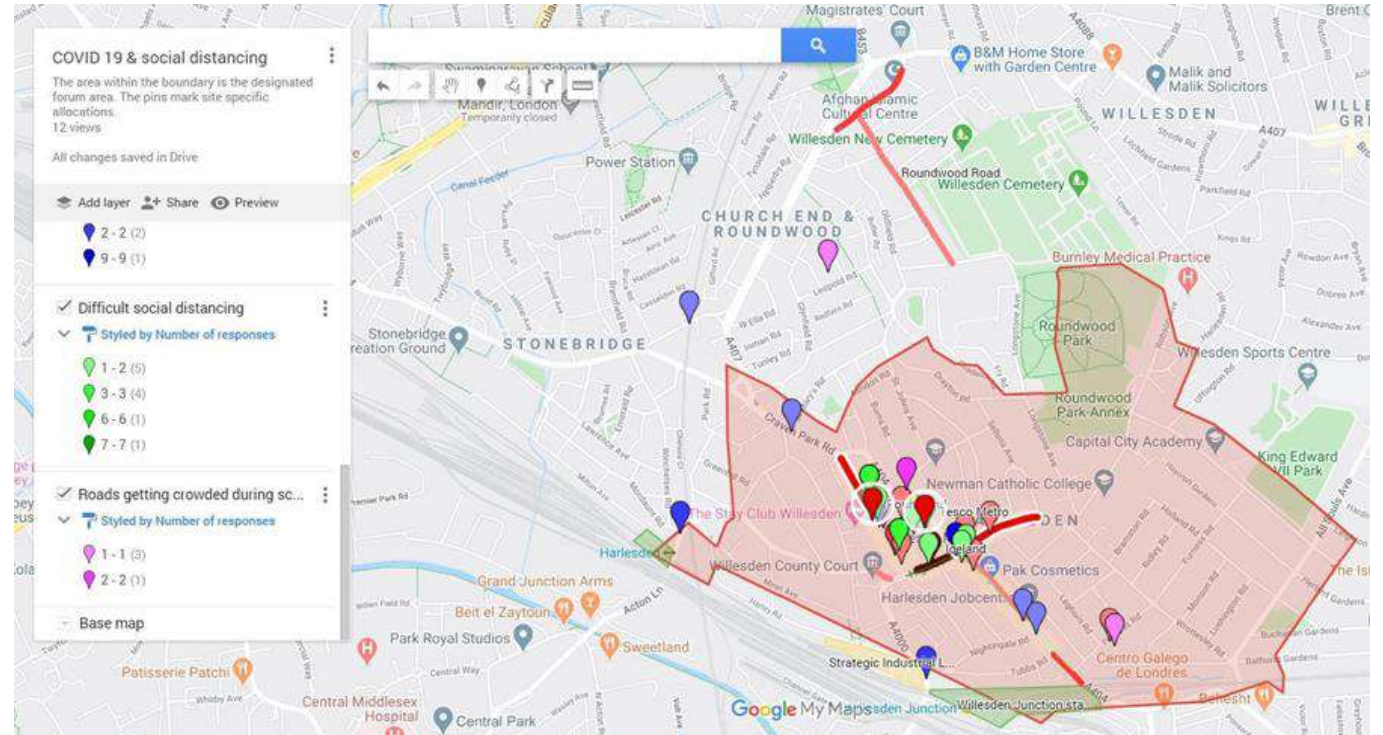
Concern about large groups of people gathering or shops trading on pavements



Concern about cars parking on pavements



Concern about narrow multiunits shops and pavements



CORONAVIRUS CASES ARE RISING: PLEASE FOLLOW THIS ADVICE



LOCAL COVID LEVEL
HIGH ALERT



Take extra care if you need to visit vulnerable people



Only socialise indoors with people you live with or those in your bubble



Work from home if you can



Travel less



You can socialise outdoors with people who are not in your bubble or household in groups of up to 6



Test and Trace

THE MAIN SYMPTOMS OF CORONAVIRUS



New,
continuous
cough



Or a high
temperature



Or a loss of, or
change to, your
sense of smell
or taste

If you have any of these symptoms,
book a free test straight away by calling Brent Council

TESTING SITE LOCATIONS

WEMBLEY

Large Car Park
London Road
Wembley
HA9 7EU

HARLESDEN

Harlesden Town Garden
Challenge Close
Harlesden
NW10 4BF

Please travel by walking or cycling if you can, and do not use public transport. If you must drive, please park in one of the nearby car parks as there is no parking outside the testing sites.

OPENING TIMES

The testing sites are open every day,
Monday to Sunday from 8am-8pm

KEY THINGS TO REMEMBER

- You should only book a test if you have one of the main symptoms of coronavirus
- You must wear a face covering and stay at least 2 metres from others at all times
- While waiting for your test or your results, **you and everyone in your household must stay at home**

www.brent.gov.uk/coronavirus

854820200

COVID SYMPTOMS?

**BOOK A FREE TEST AT THE
WEMBLEY OR HARLESDEN
WALK-THROUGH TESTING SITES**

To book, call Brent Council on

020 8937 4440

Protect your friends and family

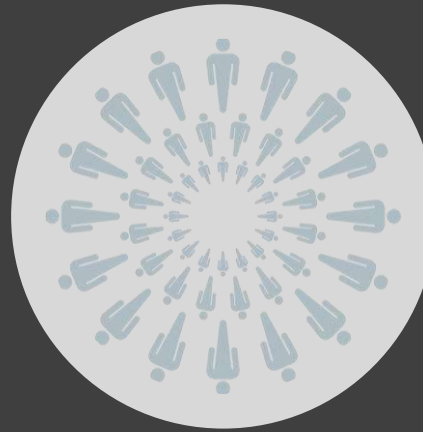
Redesignation

Harlesden Neighbourhood Forum (HNF) is a neighbourhood planning form established under the Localism Act 2011.

Neighbourhood Forums need to renew their application every 5 years

LOCALISM ACT 2011

- Neighbourhood Forum exist to improve and promote the social, economic, and environmental well-being of the defined neighbourhood area
- the purpose of the Neighbourhood Forum is in keeping with the character of the neighbourhood area
- the membership of the Neighbourhood Forum is open to those who live in, work in or are elected members for the defined Neighbourhood area.



The Harlesden Neighbourhood Forum is five years old.

By law we have to re-register with our local authorities for the next five years. To begin, we are informally consulting our members plus other Harlesden residents and businesses before the formal consultation by Brent Council starts later in the autumn.

Since 2015 we have written a comprehensive **Neighbourhood Plan** for

Neighbourhood Area Boundary

Residents living at the border are asking to expand the area further around the remainder of Roundwood Road, the stretch of Church Road that joins Craven Park and the grid of roads between them.

Some residents live in a part of the area that was assigned once to the Unity Neighbourhood Forum area, whilst they feel should be in the Harlesden Neighbourhood area.

At the moment they are associate members

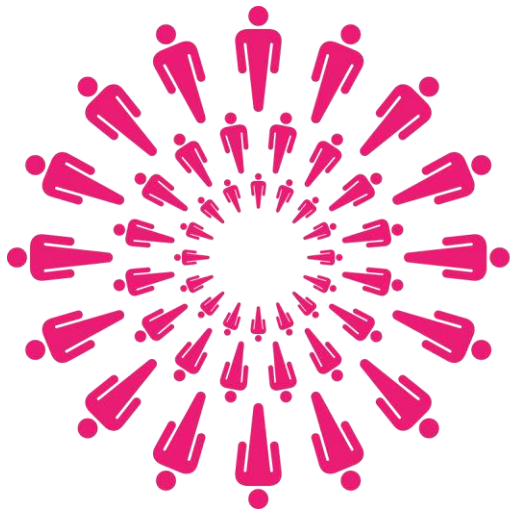
Continued interest from residents in HNF expanding its boundaries in that particular area.

HNF would like to start the conversation at the next meeting in December 2020 and the topic of expansion will be addressed in 2021 with the setting up of a working group of members and associate members living in said area to make recommendations.



The Harlesden Neighbourhood Forum is five years old.





HARLESDEN
NEIGHBOURHOOD
FORUM
shaping . planning . living

Clean Air & Environment

Madeleine Jennings, Chair HNF

Martin Page, Brent



- Awareness Raising
- Activating
- Volunteering

Bramshill Open Space

Building on the incredible work of local resident

Renette Cronje

- September Clean Up
- Garden Designer
- Grant Applications

Canal Tow Path

- Working with OPDC
- Priority is keeping it open and available to residents
- Wildlife



CLEAN AIR & ENVIRONMENT

Harlesden Trees 2020

Planted in 2019/20:

Town Centre - High Street, Craven Park Road,

Station Road Park Parade, Wendover Road

Minet Avenue & Minet Gardens

Holland Road

To plant winter 2020/21:

Leopold Road & Redfern Road

Inman Road & Tunley Road

Brownlow Road & Goodson Road

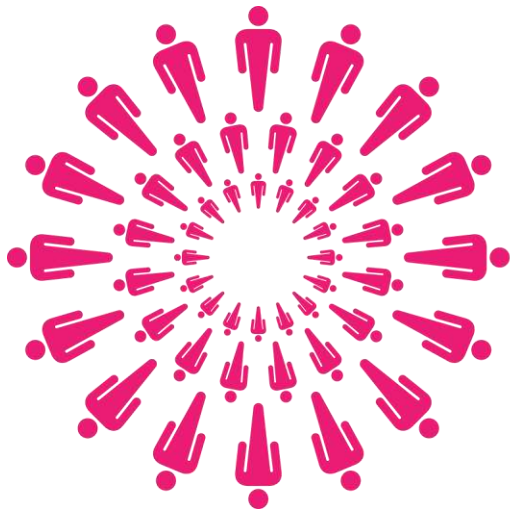
Nightingale Road & Tubbs Road

Herbert Gardens & Burns Road



Contact
martin.page@brent.gov.uk
07876 001712





HARLESDEN
NEIGHBOURHOOD
FORUM
shaping . planning . living

Inclusive Growth

Sandra White – Vice Chair



Harlesden Inclusive Growth Strategy



A Harlesden
for everyone

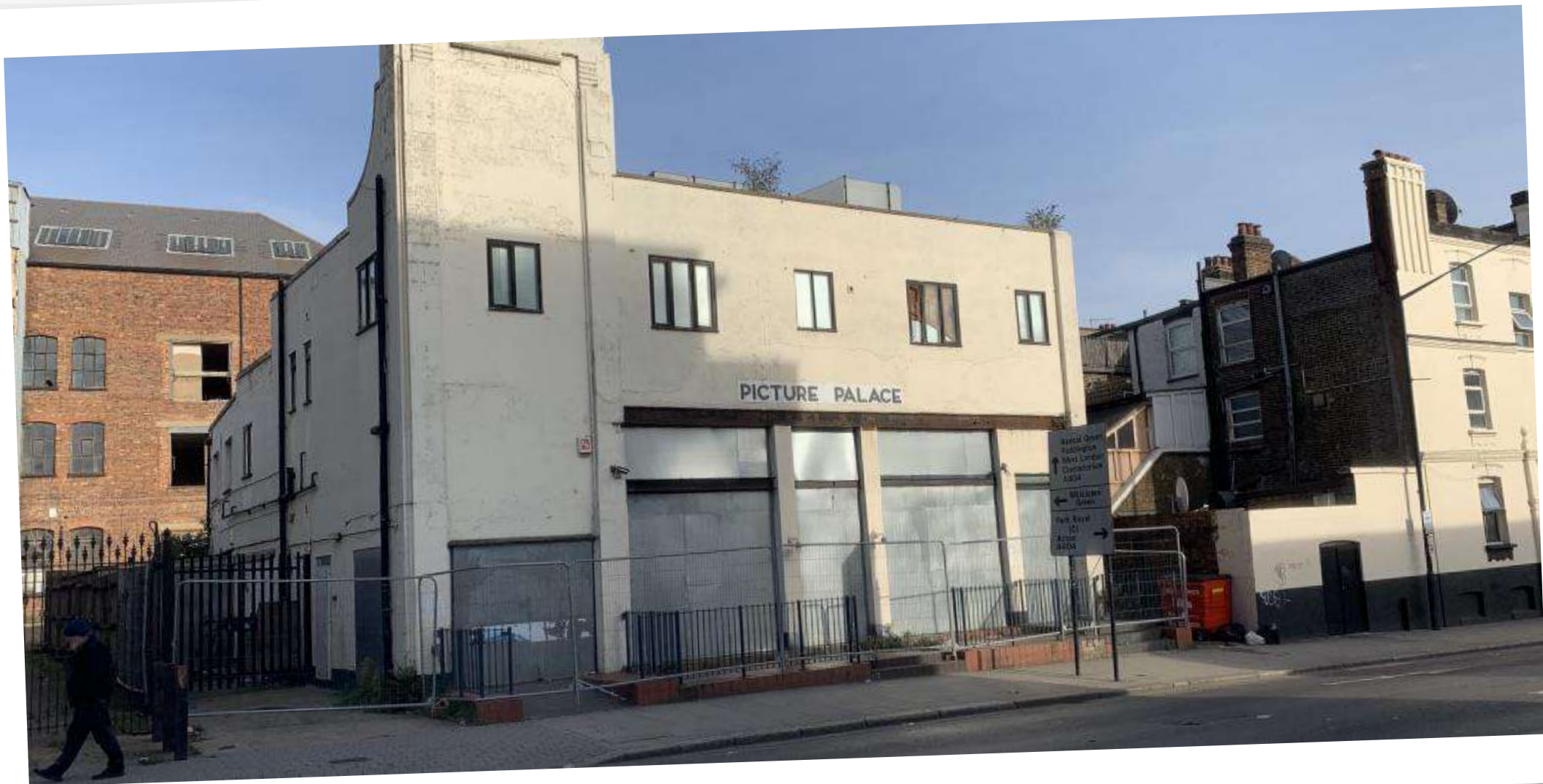


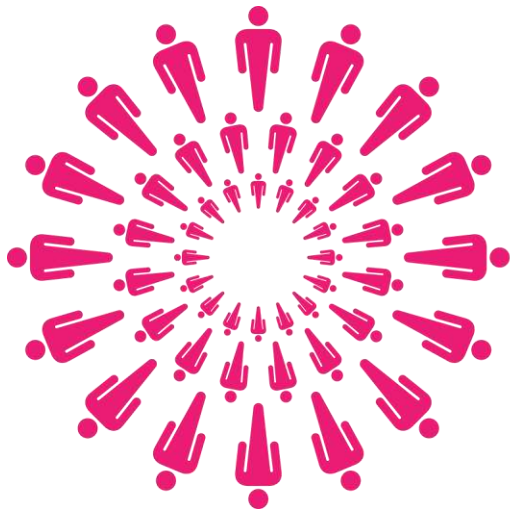
Investment
means growth



Strength in
Unity





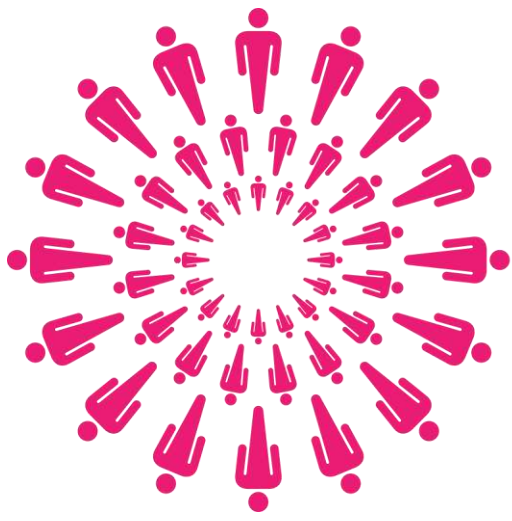


HARLESDEN
NEIGHBOURHOOD
FORUM
shaping . planning . living

OPDC - Engagement

Errol Donald - Trustee





**HARLESDEN
NEIGHBOURHOOD
FORUM**
shaping . planning . living

OPDC
OLD OAK AND
PARK ROYAL
DEVELOPMENT
CORPORATION

**We want to make sure Harlesden, its residents, businesses
and organisations will benefit from the development**

**Community and broader public
engagement on the OPDC plan**

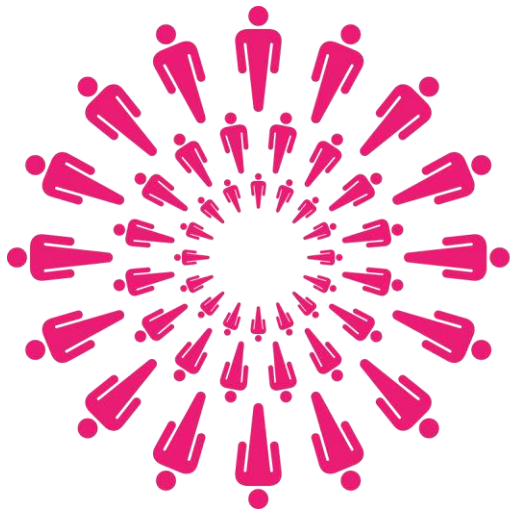
Key points

- Housing
- Commercial direction
- Funding
- Facilities and resources

Marketing & Communication

Key points

- Strategic Mar-comms plan
- Core messages
- Banners 2.0
- Public engagement



HARLESDEN
NEIGHBOURHOOD
FORUM
shaping . planning . living

Planning 2020

Colin George - Trustee





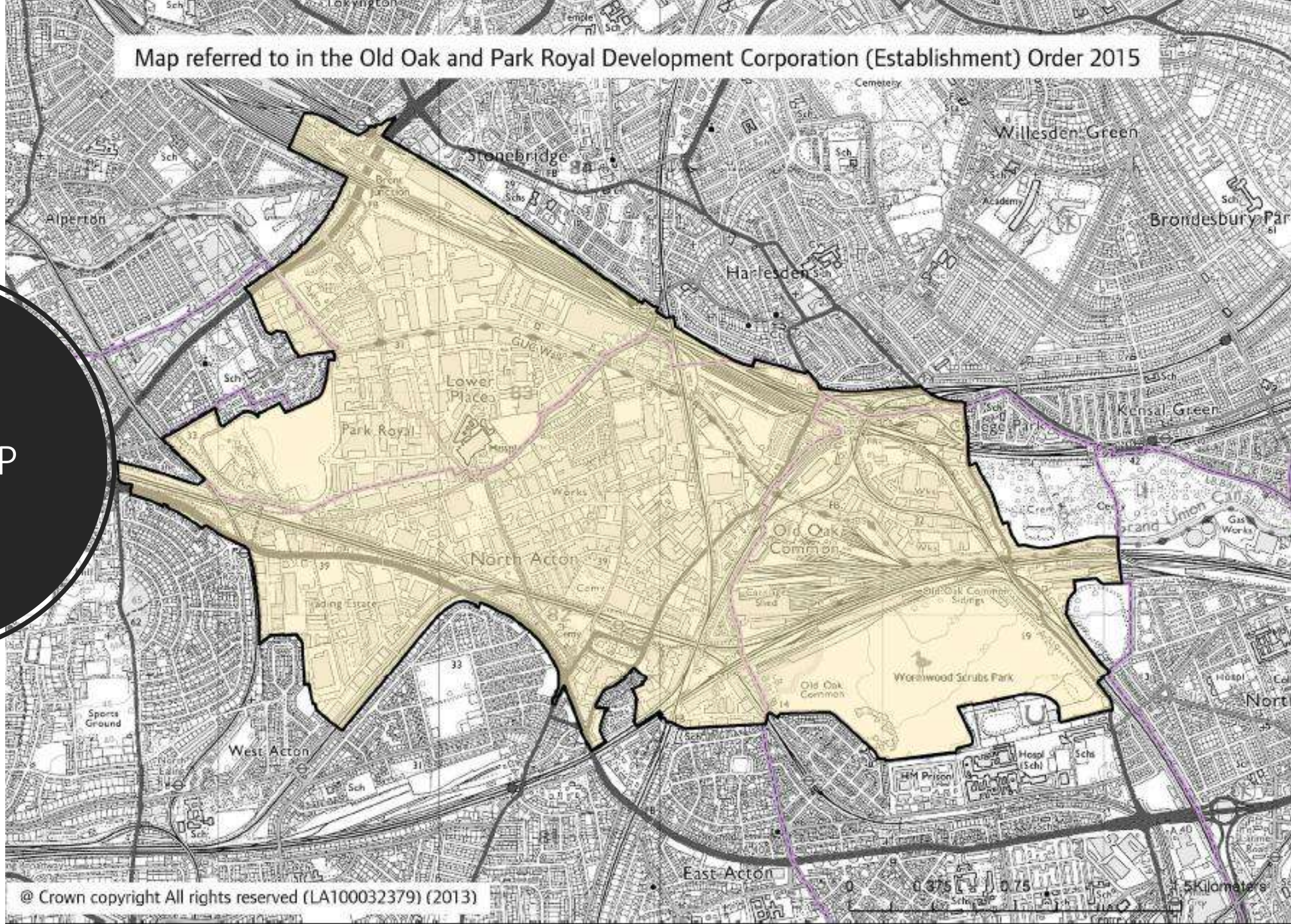


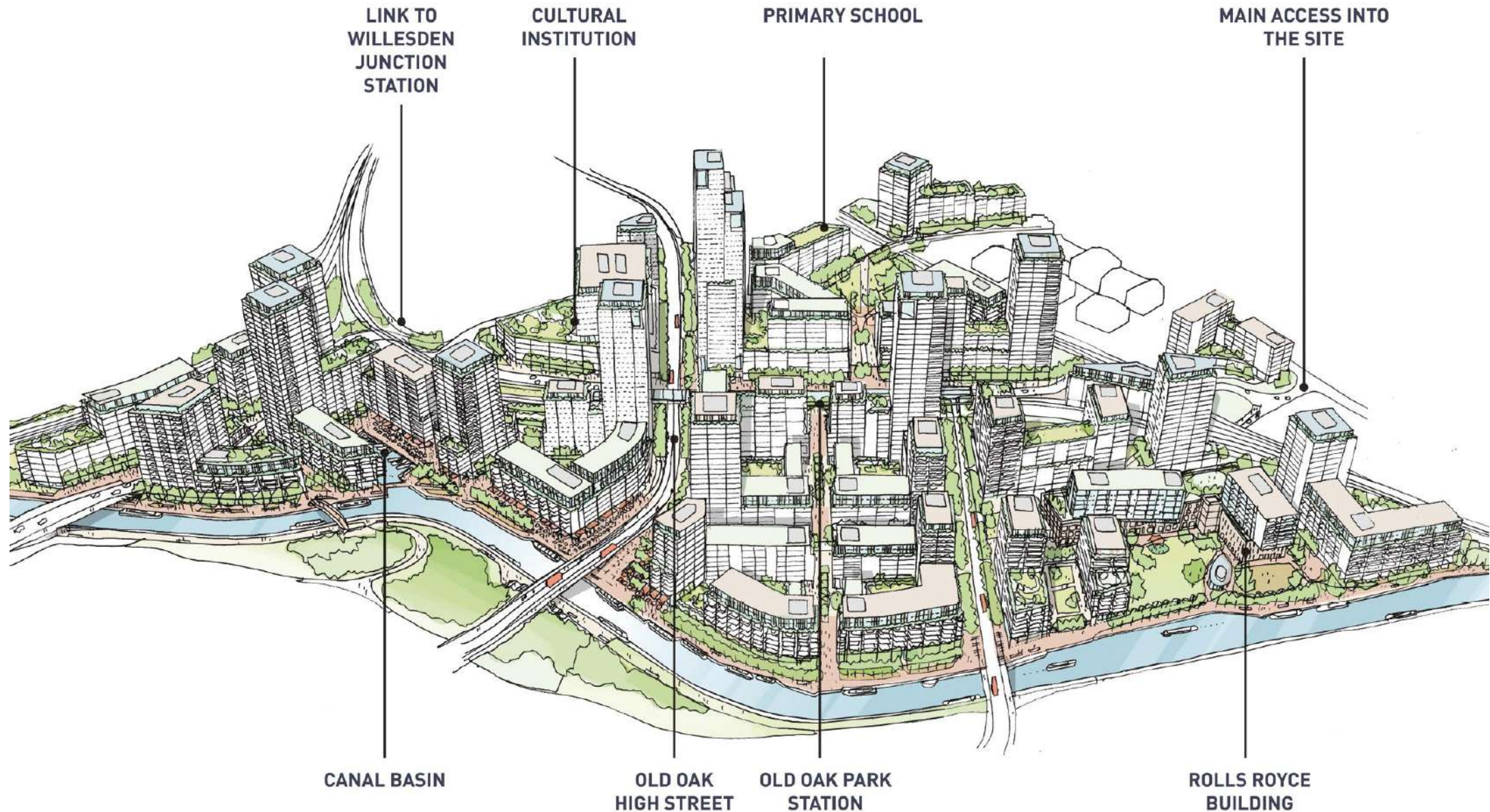


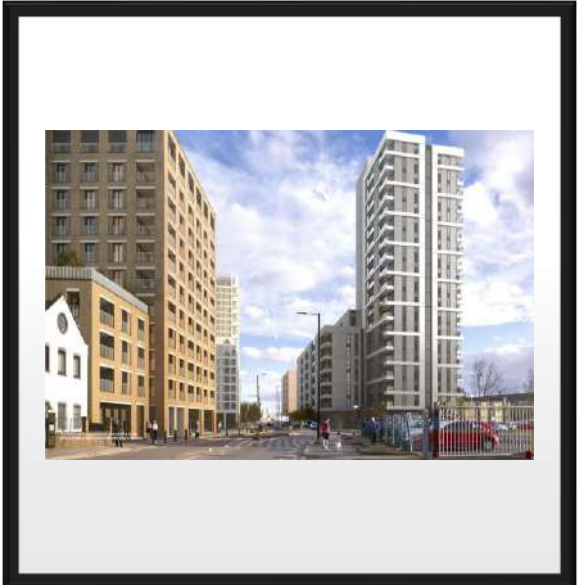
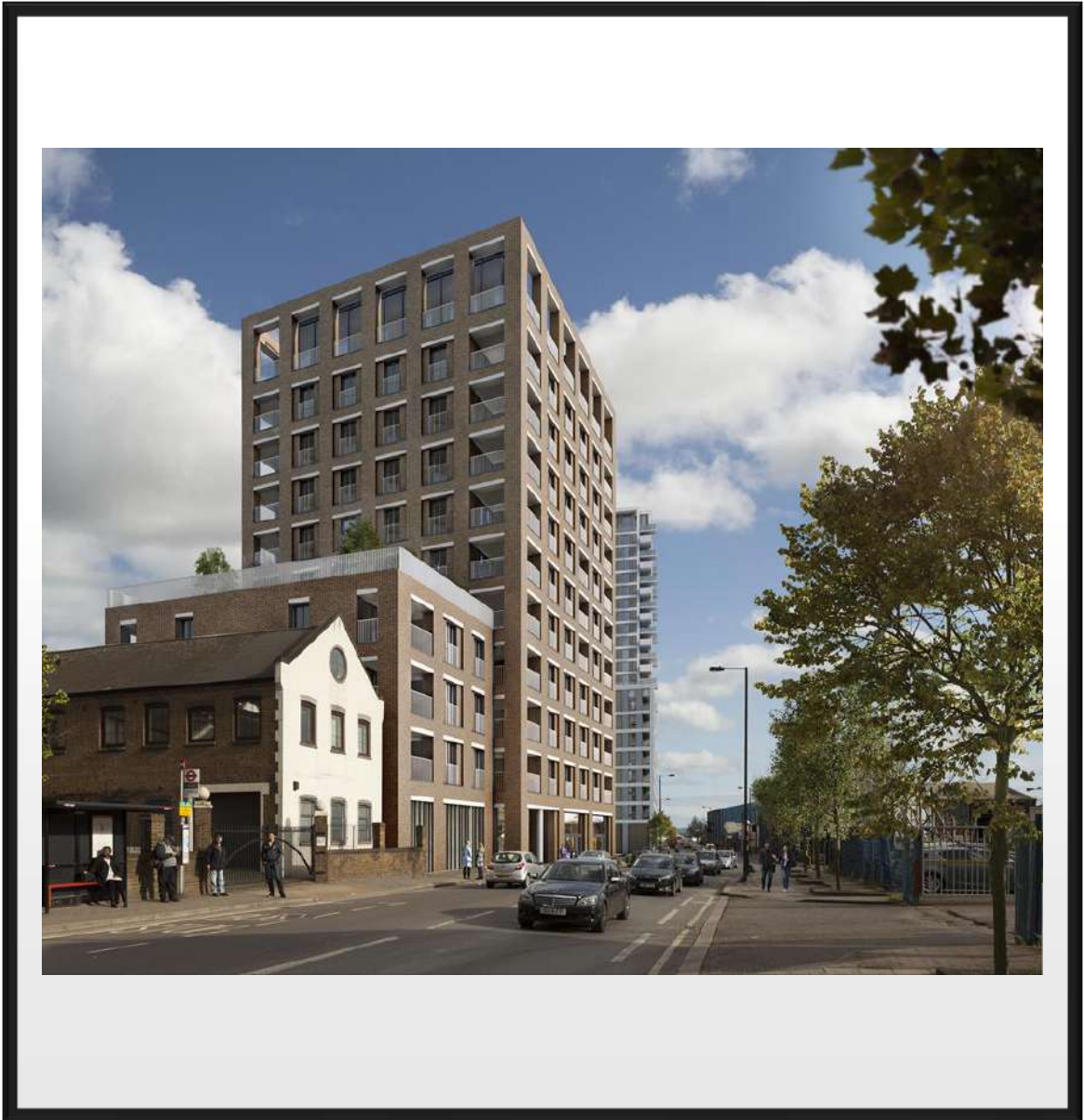
Map referred to in the Old Oak and Park Royal Development Corporation (Establishment) Order 2015



OPDC MAP







The Making of...

Old Oak + Park Royal







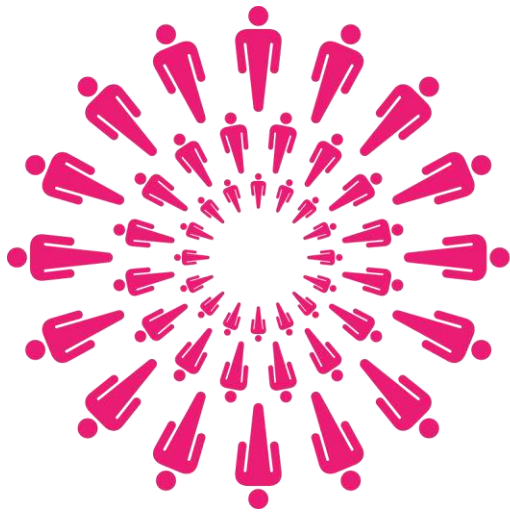
Part 1 of 2
Vision and Strategy

OPDC
OLD OAK AND
PARK ROYAL
DEVELOPMENT
CORPORATION

MAYOR OF LONDON

Canal Placemaking

in the making



HARLESDEN
NEIGHBOURHOOD
FORUM
shaping . planning . living

Statements of Accounts

Paul Anders - Trustee





STATEMENTS OF ACCOUNTS 2019-2020

As HNF is a registered charity as of 11th March 2020, all reports from now on will be submitted to the Charity Commission and will meet statutory requirements.

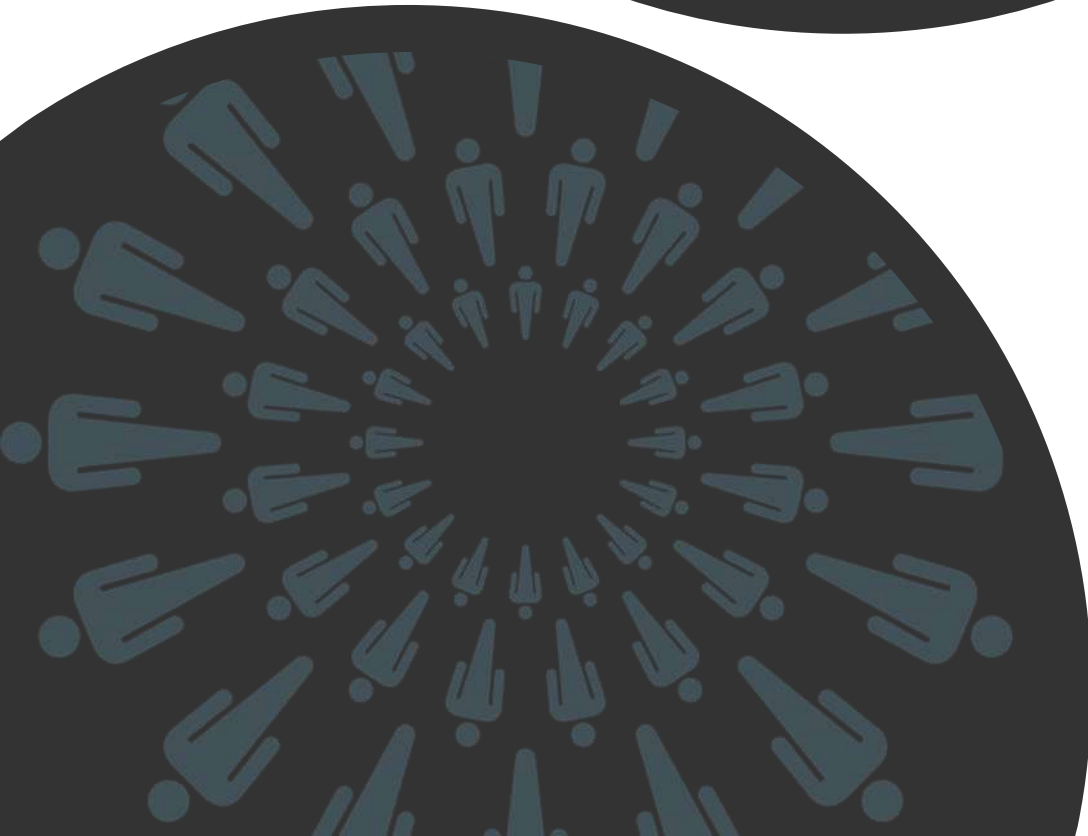
	2019-2020	Source/reason
Opening balance	£ 2,967.32	
Income	£ 0.00*	
Expenditure	£ 1,567.16**	Wayfinding project
Closing balance	£ 1,400.16	

*No income during the financial year 2019-20. Funding secured from Trust for London, enabling the employment of a part-time Forum Coordinator will be reported in next year's statement of accounts.

**All expenditure related to wayfinding project.

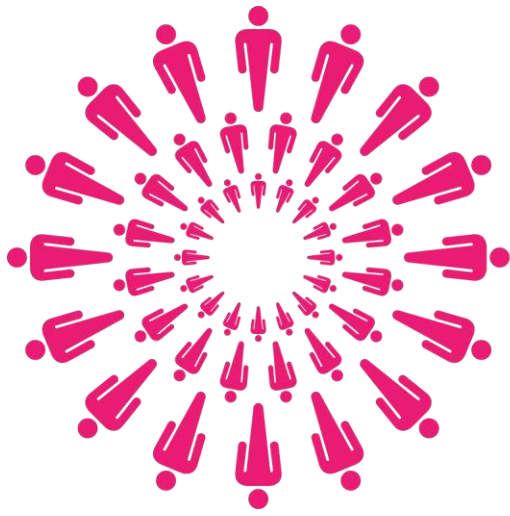


HARLES DEN
NEIGHBOURHOOD
FORUM
shaping . planning



TRUSTEES

**Presentation
&
Appointment**



HARLESDEN
NEIGHBOURHOOD
FORUM
shaping . planning . living

AOB



Thank you!

